

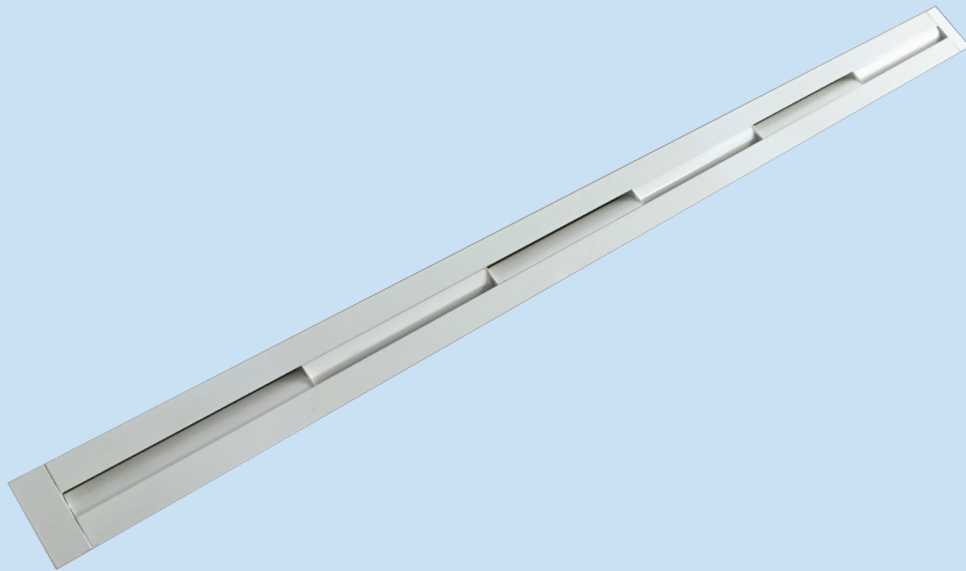
RBF

slot diffuser



2.7

2 SLOT DIFFUSER

**Design:**

Series RBF is a linear diffuser, with a system slot width of 22 mm, intended for mounting in walls and ceilings. The diffuser can be delivered as single or multi-slot versions (maximum 4-slot model) suitable for modular or continuous runs.

Function:

The air pattern control elements (250 mm long) arranged within the diffuser have a blade shape and can be adjusted individually. The diffuser can be used for exhaust and supply air, and is suitable for constant or variable air flow systems in rooms with a ceiling height of 2,75 m to 3,9 m.

Recommended operational range

- Volume flow lies between 72 – 720 m³/h per m
- Temperature differential of +8 K to -12 K.

Material:

Frames and blades made from extruded aluminium profiles, naturally anodized or coated in white (RAL 9003). Plenum box made from galvanized steel material.

Accessories & Options:

- internal insulation
- perforated throttle inside spigot
- thermal adjustment
- profile coating in an RAL colour of your choice

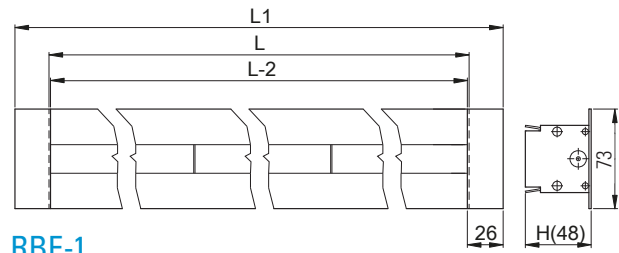
RBF

slot diffuser

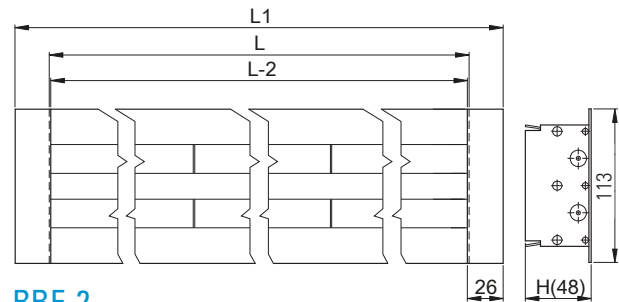


dimensions:

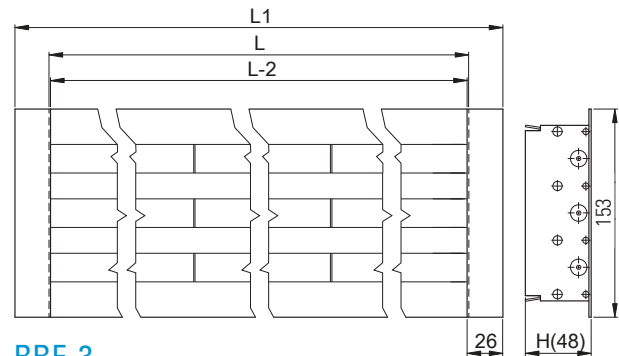
size	L [mm]	L1 [mm]	B + 31 [mm]	H [mm]	number/elements
500	500	550	73	48	1 x 2
1000	1000	1050			1 x 4
1250	1250	1300			1 x 5
1500	1500	1550			1 x 6
2000	2000	2050			1 x 8


RBF-1

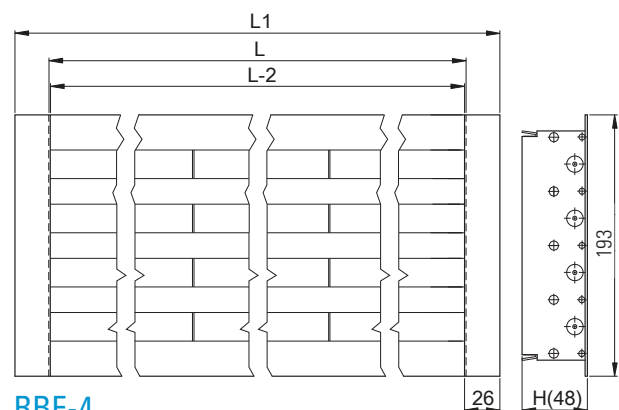
size	L [mm]	L1 [mm]	B + 31 [mm]	H [mm]	number/elements
500	500	550	113	48	2 x 2
1000	1000	1050			2 x 4
1250	1250	1300			2 x 5
1500	1500	1550			2 x 6
2000	2000	2050			2 x 8


RBF-2

size	L [mm]	L1 [mm]	B + 31 [mm]	H [mm]	number/elements
500	500	550	153	48	3 x 2
1000	1000	1050			3 x 4
1250	1250	1300			3 x 5
1500	1500	1550			3 x 6
2000	2000	2050			3 x 8


RBF-3

size	L [mm]	L1 [mm]	B + 31 [mm]	H [mm]	number/elements
500	500	550	193	48	4 x 2
1000	1000	1050			4 x 4
1250	1250	1300			4 x 5
1500	1500	1550			4 x 6
2000	2000	2050			4 x 8

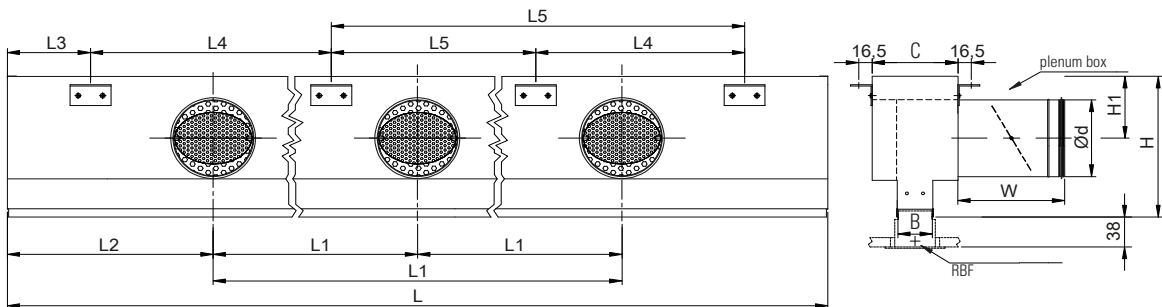

RBF-4

RBF

slot diffuser



dimensions (plenum box):

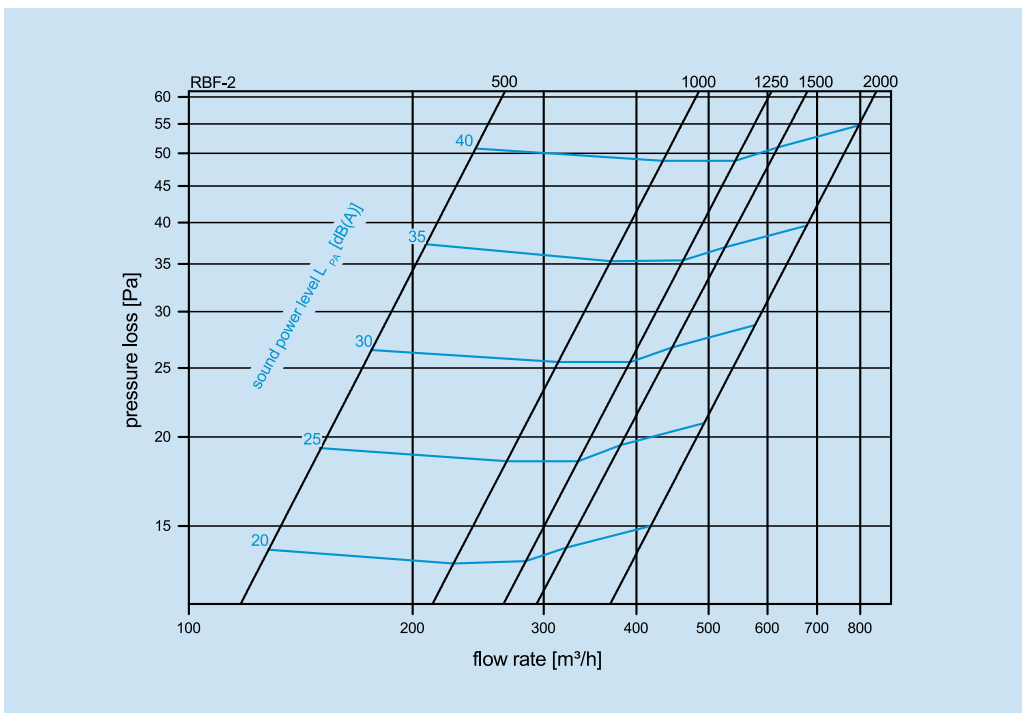
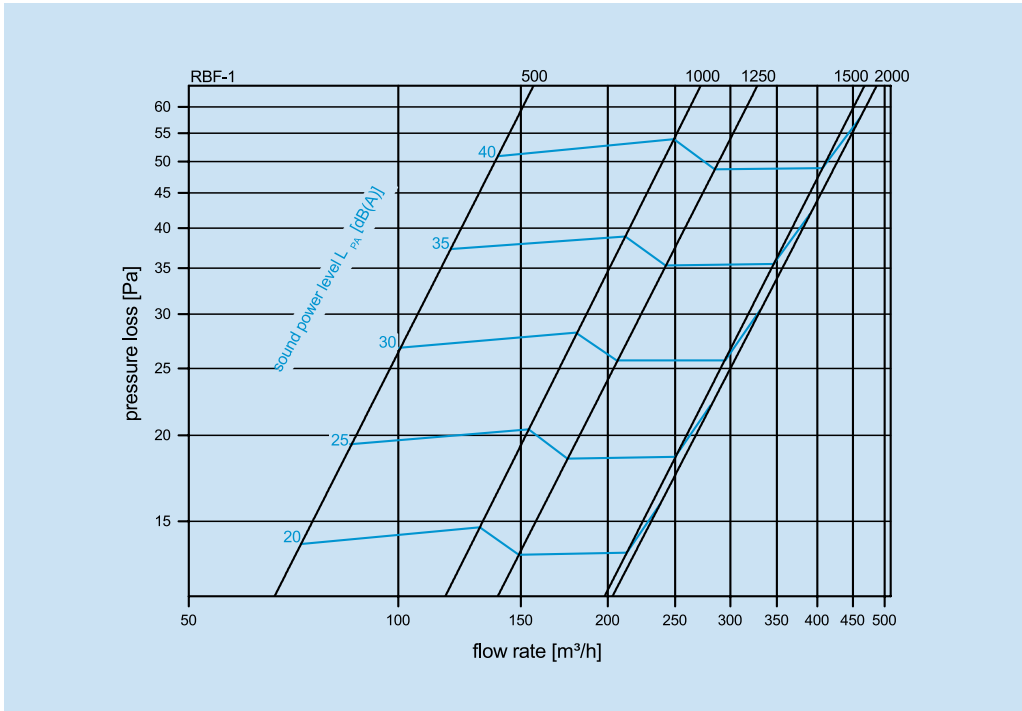


size box	number slots	L [mm]	B [mm]	Ød [mm]	L1 [mm]	L2 [mm]	C [mm]	W [mm]	H [mm]	H1 [mm]	L3 [mm]	L4 [mm]	L5 [mm]
500	1	500	42	1 x 98	-	250	105	134,5	181	80	75	350	-
	2		82	1 x 123			145	153,5	206	92,5			
	3		122	1 x 158			185	183,5	241	110			
	4		162	1 x 198			225	213,5	281	130			
1000	1	1000	42	1 x 98	-	500	105	134,5	181	80	150	700	-
	2		82	1 x 158			145	183,5	241	110			
	3		122	1 x 198			185	213,5	281	130			
	4		162	1 x 248			225	273,5	331	155			
1250	1	1250	42	2 x 98	650	300	105	134,5	181	80	150	500	450
	2		82	1 x 123	-	625	145	183,5	241	110			
	3		122	1 x 158			185	213,5	281	130			
	4		162	1 x 198			225	273,5	331	155			
1500	1	1500	42	2 x 98			700	400	105	134,5	181	80	150
	2		82	2 x 158	145	183,5			241	110			
	3		122	2 x 198	185	213,5			281	130			
	4		162	2 x 248	225	273,5			331	155			
2000	1	2000	42	3 x 98	600	400	105	134,5	181	80	150	550	600
	2		82	2 x 158	1000	500	145	183,5	241	110			
	3		122	2 x 198			185	213,5	281	130			
	4		162	2 x 248			225	273,5	331	155			

RBF
slot diffuser



flow data:



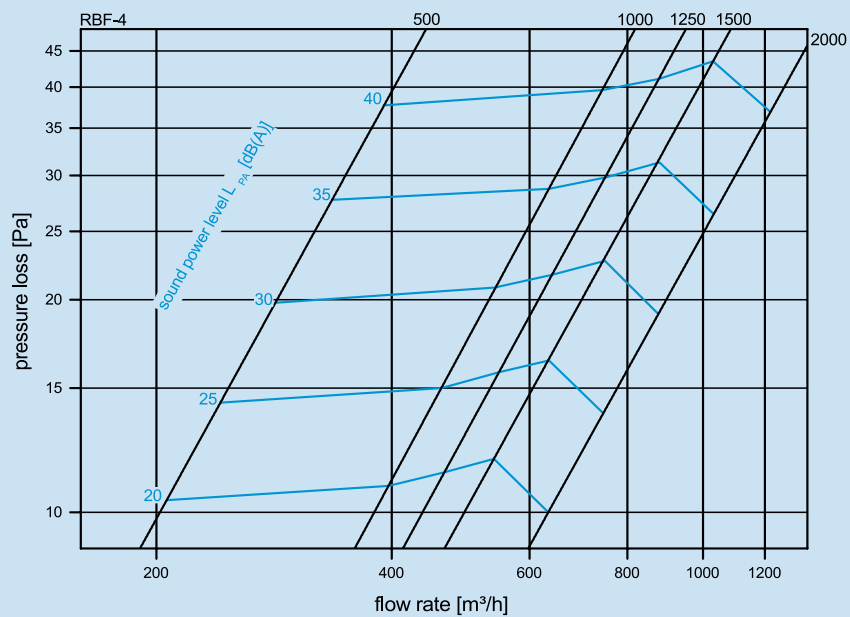
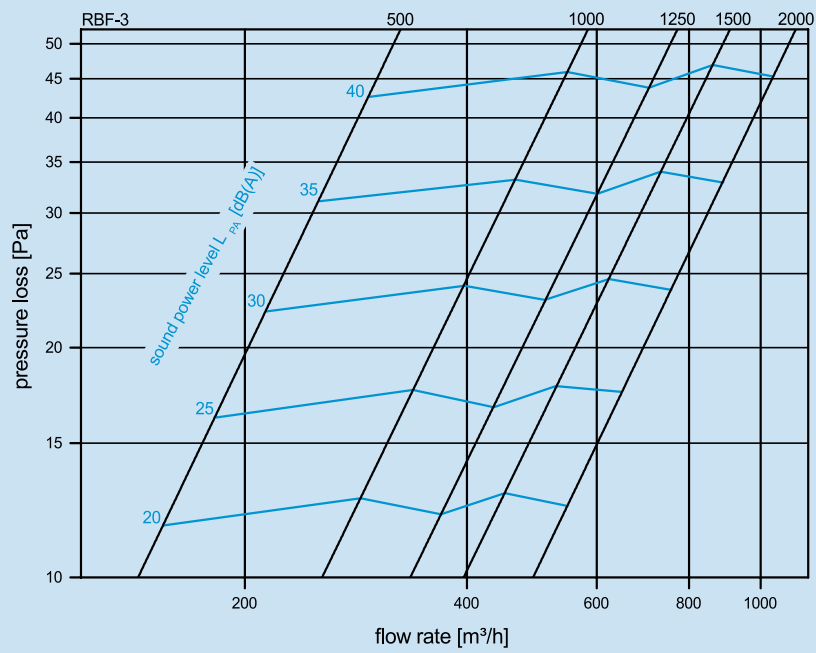
RBF
slot diffuser



2.7

2 SLOT DIFFUSER

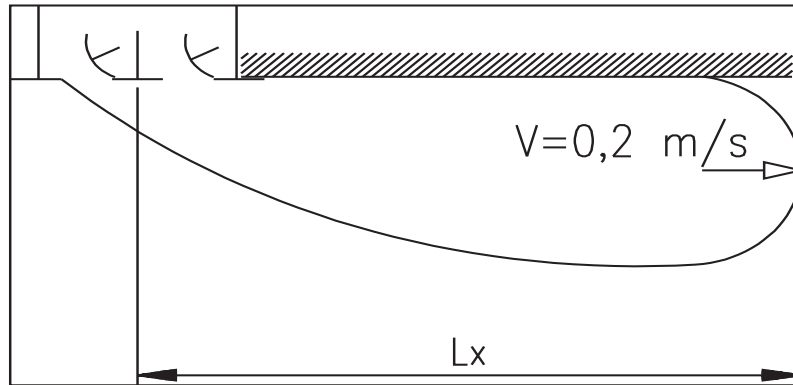
flow data:



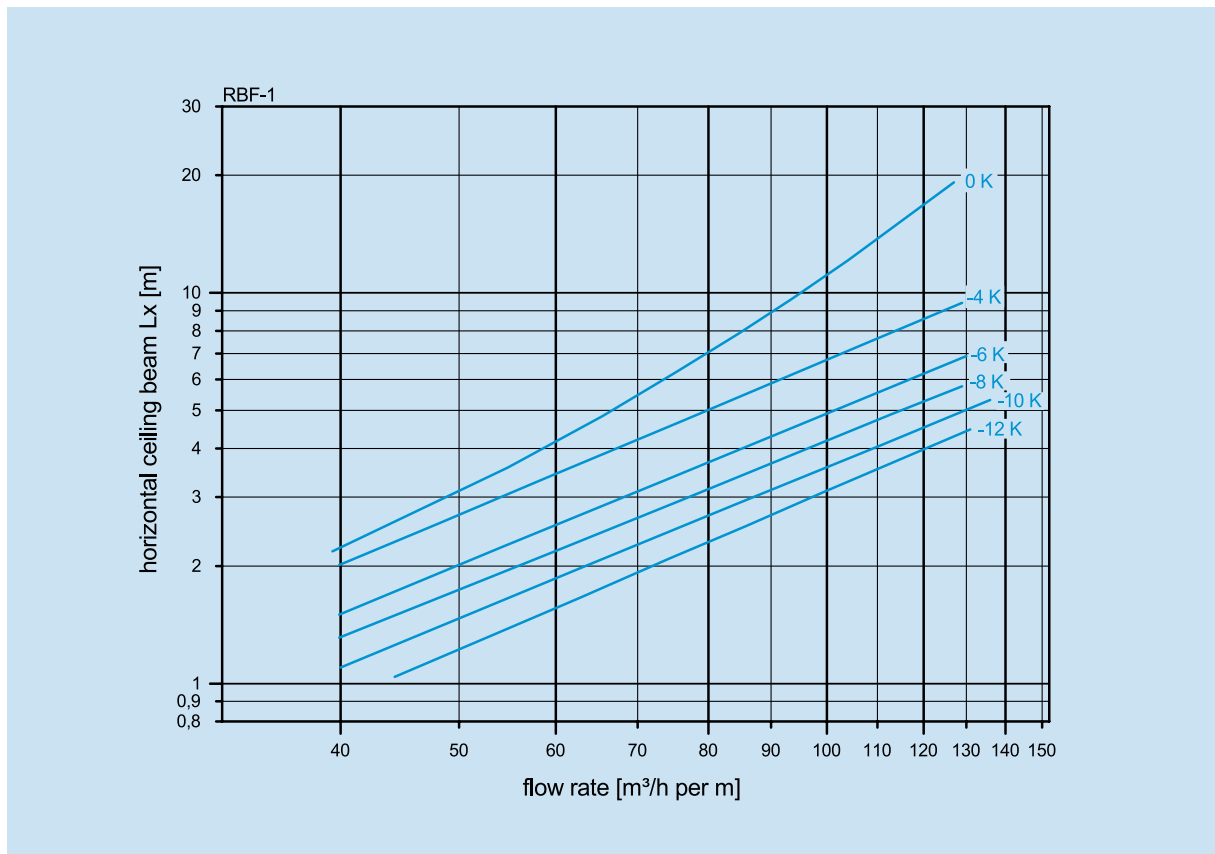
RBF
slot diffuser



horizontal throws:



flow data:

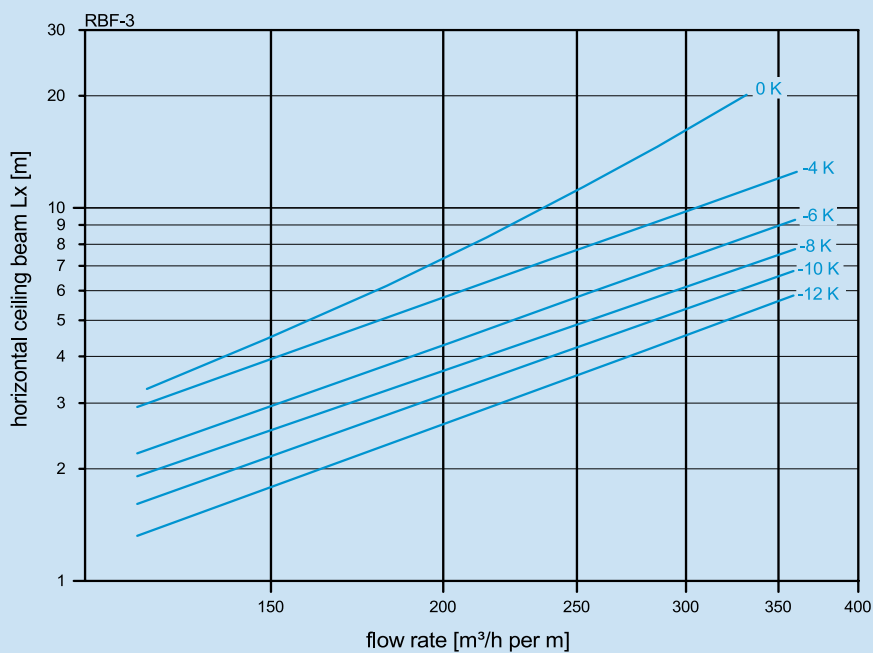
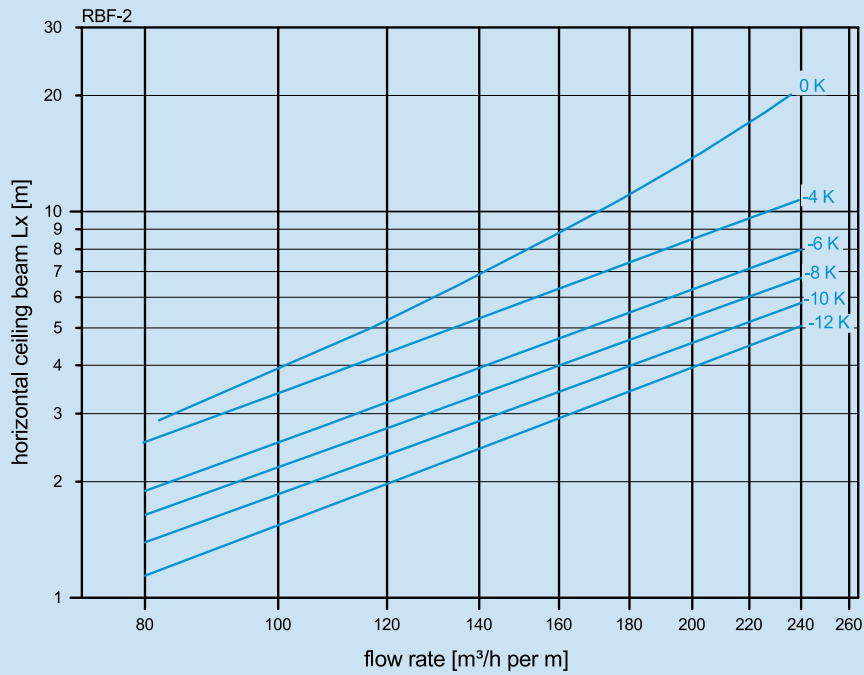


RBF
slot diffuser

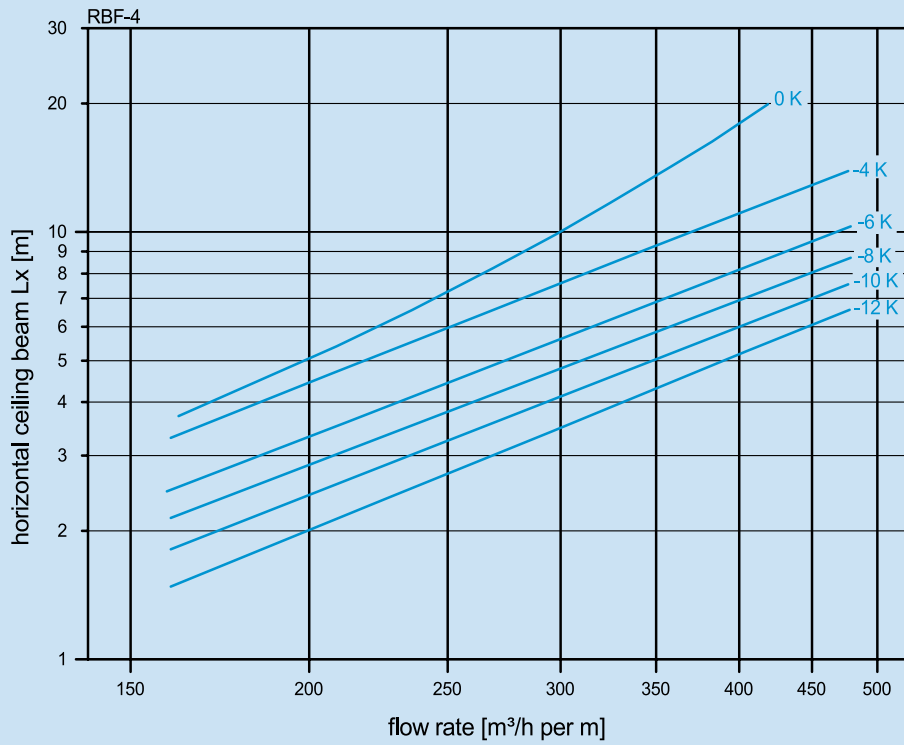


2.7

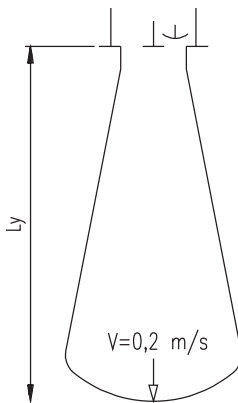
2 SLOT DIFFUSER



RBF
slot diffuser



vertical throws:



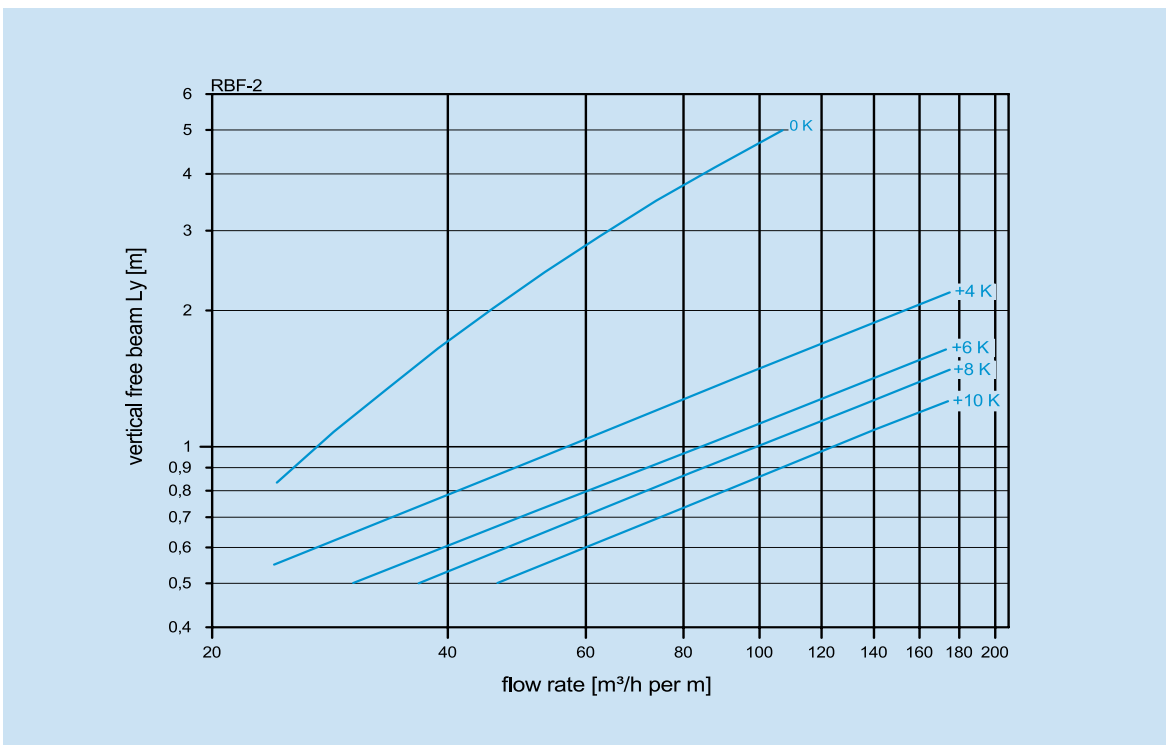
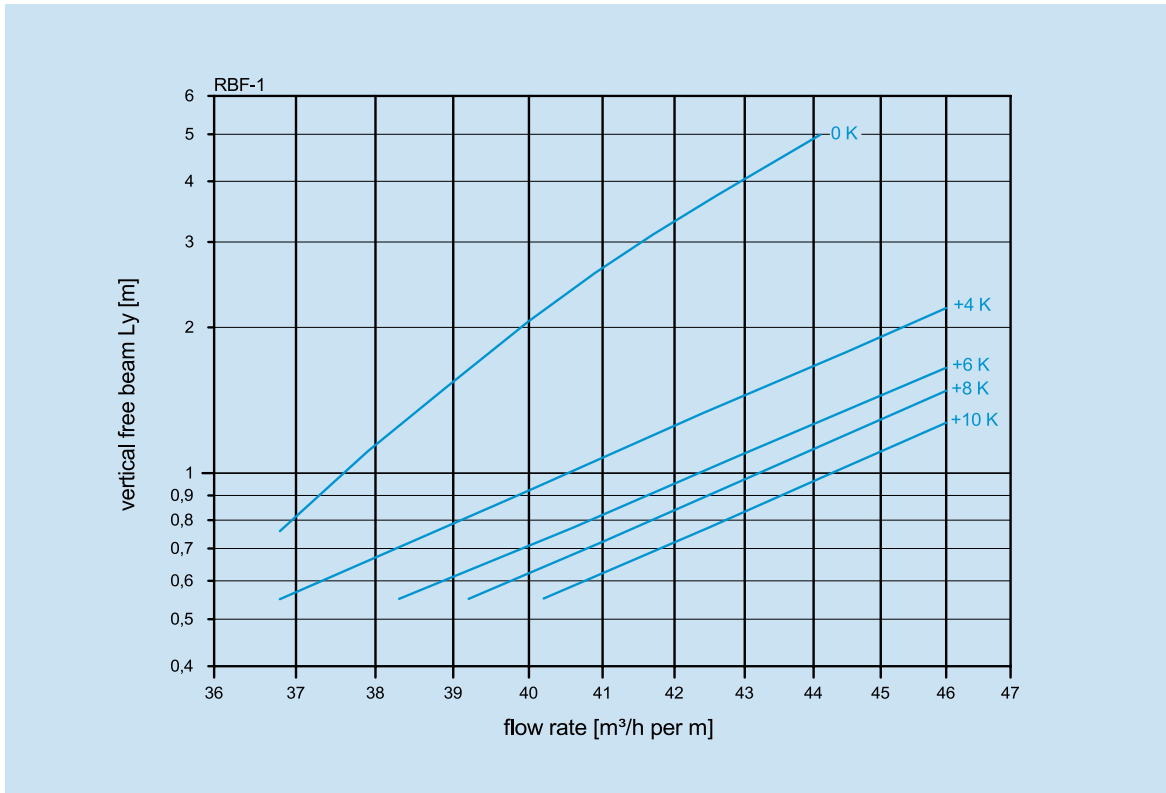
RBF
slot diffuser



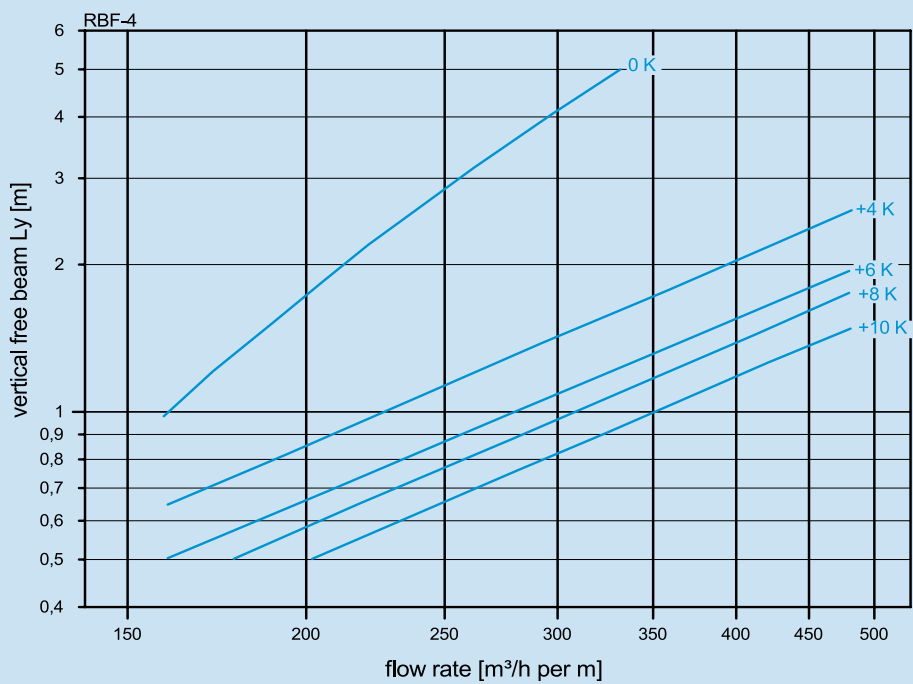
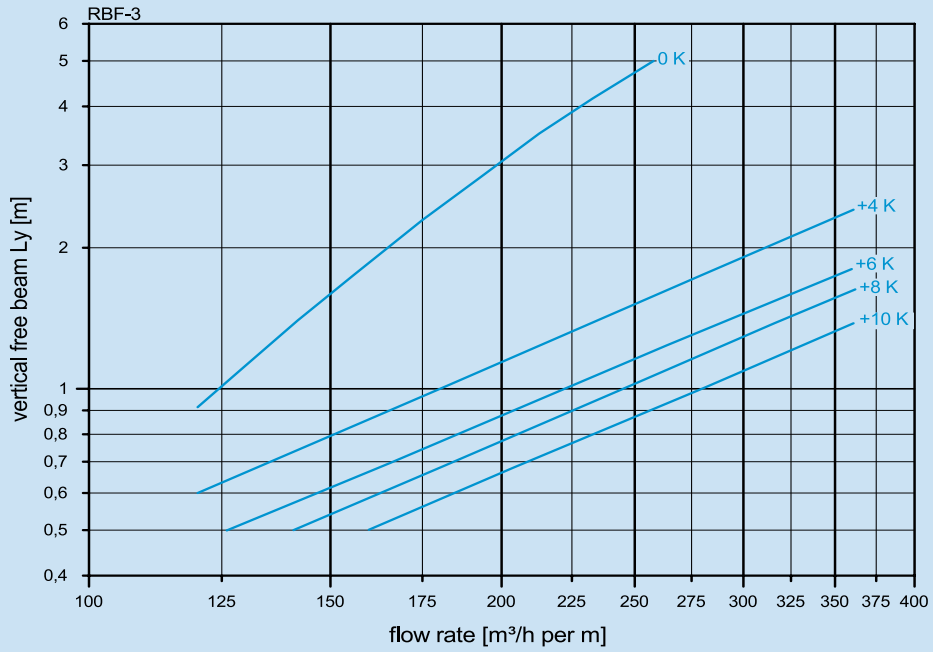
2.7

2 SLOT DIFFUSER

flow data:



RBF
slot diffuser



RBF

slot diffuser



2.7

2 SLOT DIFFUSER

Tender text

- RBF** Series RBF is a linear diffuser, with a system slot width of 22 mm, intended for mounting in walls and ceilings consisting of the air pattern control elements (250 mm long) individually adjustable. Frames and blades made from extruded aluminium profiles, naturally anodized or coated in white (RAL 9003). Plenum box made from galvanized steel material.
- TH** with thermal adjustment
- AK/H** plenum box with horizontal spigot, made from galvanized steel.
- AK/V** plenum box with vertical spigot, made from galvanized steel.
- D** perforated throttle inside spigot.

Manufacture SLT · Lenzfeld 8 · D - 49811 Lingen (Ems)
Tel. +49(0)591/97337-0 · Fax +49(0)591/97337-50 · info@slt-lingen.de

Type RBF -

Quantity pcs.

Ordering example

RBF - 4 - TH - AK/H - D - 1250

